

Quiz

WHAT IS YOUR DIAGNOSIS?

A 66-year-old woman was presented with the perirenal tumor 15×10 mm close to the superior pole of the right kidney. Macroscopically a perirenal tumor consisted of considerably fragile tissue fragment measuring $1.5 \times 1.0 \times 0.6$ cm. Histologically, in routine hematoxylin-eosin stained sections the perirenal tumor was composed of polygonal clear cells or cells with eosinophilic cytoplasm with moderate epithelioid appearance (Fig. 1). In the most cells nuclear polymorphism was prominent. Up to 2-3 mitoses per 10 high-power fields were present. Furthermore, the

tumor showed abundant vascularity (Fig. 2). The resection was microscopically incomplete.

Immunohistochemically cytokeratin AE1/AE3, cytokeratin 20, cytokeratin 7, CD10 and protein S-100 were negative, whereas we noted positivity of HMB-45 (++) (Fig. 3), alpha smooth actin (+++), vimentin (++), estrogen receptor alpha (++) and focally desmin (+). Nuclear immunopositivity of Ki67 was present in 8% of tumor cells. The small vessels were revealed using CD34 antibody.

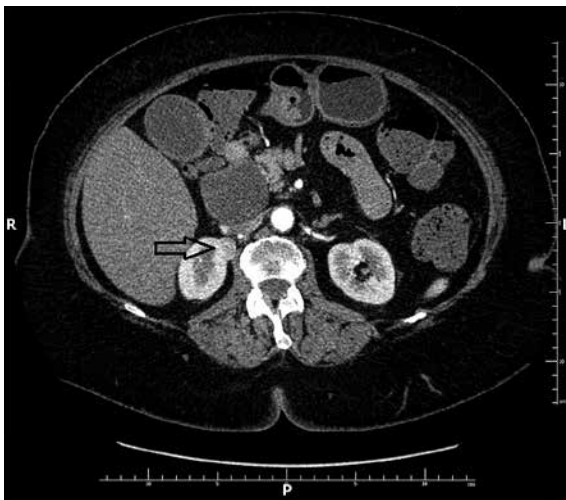


Fig. 1.

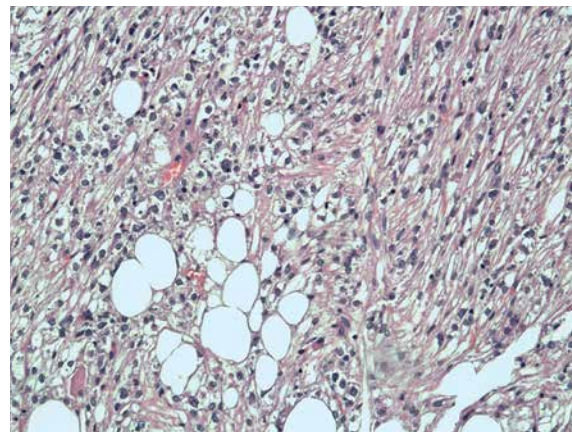


Fig. 2.

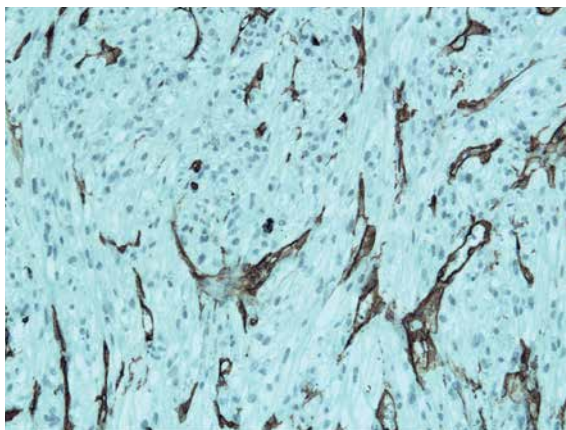


Fig. 3.

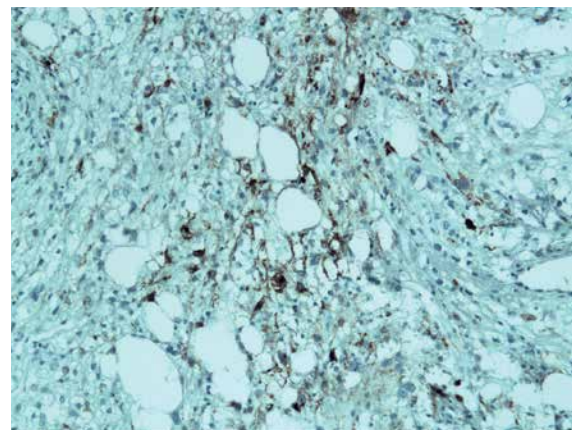


Fig. 4.

Marian Danilewicz¹, Janusz Strzelczyk², Małgorzata Wągrowa-Danilewicz³

¹Department of Pathology, Medical University of Lodz, Poland

²Department of General and Transplant Surgery, Medical University of Lodz, Poland

³Department of Nephropathology, Medical University of Lodz, Poland

Answers should be sent to the Editorial Office by 15.03.2017. The correct answer will be announced in the next issue of the *Polish Journal of Pathology*. All participants with the highest number of correct answers to the quizzes published in vol. 67 (4 issues) will be entered into the prize draw for a book.